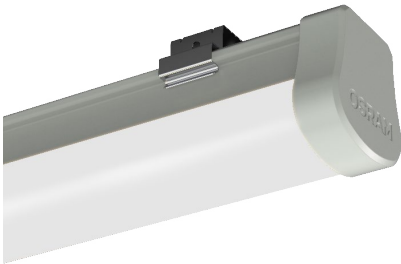


---

## LUXPOINT® LED Waterproof Batten - Gerran Datasheet



**CE** IP65 IK06

The Gerran LED Waterproof Batten is designed for durability and high performance in challenging environments. With an IP65 rating, it offers excellent protection against dust and water ingress. The IK06 rating ensures resistance to impact, providing added security in high-traffic areas. The sleek design allows for easy installation in commercial, industrial, and residential settings.

### Benefits

- Durability
- Energy Efficiency
- Versatility of Size
- Wide Range of Application
- High protection rating

### Applications

- Warehouse
- Factories
- Parking garages
- Other demanding environments

# LUXPOINT® LED Waterproof Batten - Gerran

## Technical Data

### Optical Specifications

<b>Wattage</b>		18W	36W	45W
<b>Luminous Flux @CCT</b>	<b>3000K</b>	1710lm	3600lm	4500lm
	<b>4000K</b>	1800lm	3960lm	4900lm
	<b>6500K</b>	1800lm	3960lm	4900lm
<b>Total luminous flux of contained light sources @CCT</b>	<b>3000K</b>	2550lm	5100lm	5800lm
	<b>4000K</b>	2650lm	5300lm	6300lm
	<b>6500K</b>	2650lm	5300lm	6300lm
<b>Efficacy</b>		96-100lm/W	95-100lm/W	95-100lm/W
<b>Flickering metric (Pst LM)</b>		<1	<1	<1
<b>Stroboscope effect metric (SVM)</b>		<0.4	<0.4	<0.4
<b>CRI</b>		≥80	≥80	≥80
<b>SDCM</b>		< 6	< 6	< 6
<b>Beam Angle</b>		120°		
<b>Photobiological safety group acc. To EN62778</b>		RG0	RG0	RG0
<b>Photobiological safety group acc. To EN62471</b>		RG0	RG0	RG0
<b>Dimmable</b>		No	No	No

### Electrical and Mechanical Specifications

<b>Dimmable Input Voltage</b>		<b>220-240V ~50/60Hz</b>		
<b>Nominal Current</b>		140mA	160mA	200mA
<b>Inrush current time Th50</b>		100µs@25A	100µs@25A	100µs@25A
<b>Power Factor</b>		0.5	0.9	0.9
<b>Max. number of luminaires per miniature circuit breaker</b>	<b>B16</b>	37	23	21
	<b>C10</b>	30	18	17
	<b>C16</b>	48	30	27
<b>Protection class</b>		Class II	Class II	Class II
<b>Dimensions</b>		L 565mm	L 1165mm	L 1465mm
		W 43mm	W 43mm	W 43mm
		H 47mm	H 47mm	H 47mm
<b>Weight</b>		157g	296g	368g
<b>Housing</b>		Polycarbonate(PC)		
<b>Diffuser</b>		Polystyrene (PS)		
<b>Replaceable light source</b>		No		
<b>Replaceable Control gear</b>		No		
<b>Glow wire test according to IEC60695-2-12</b>		650°C		

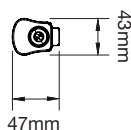
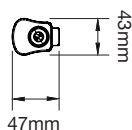
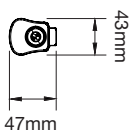
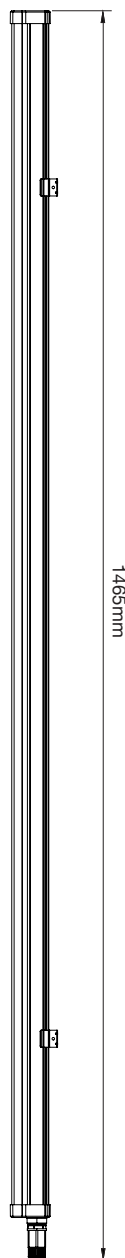
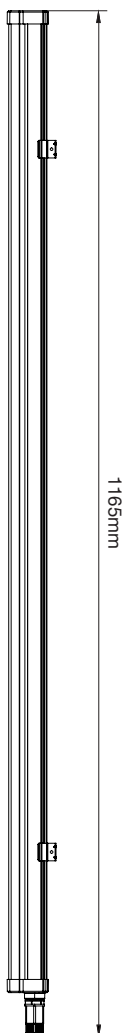
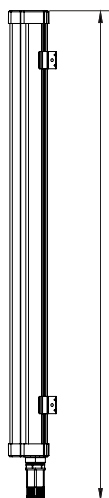
### System Specifications

<b>Power</b>	AC mains
<b>Operating Temperature</b>	-20°C ~ 40°C
<b>Storage Temperature</b>	-40°C ~ 70°C
<b>Lifespan L70/B50 at 45°C</b>	15,000 hours
<b>Lifespan L70/B50 at 25°C</b>	30,000 hours
<b>Number of switching cycles</b>	15,000
<b>Environment</b>	Indoor
<b>Safety Approval</b>	CE, RoHS
<b>Mercury content</b>	0.0mg
<b>Warranty</b>	2 years

# LUXPOINT® LED Waterproof Batten - Gerran

Dimension (Unit: mm)

## Class I



Due to the special conditions of manufacturing process of LED, the typical data of technical parameters can only reflect statistical figures and do not necessarily correspond to the actual parameters of each single product which could differ from typical data.

Exceeding maximum ratings for operation voltage will cause hazardous overload and will likely destroy the LED module.

Exceeding maximum ratings for operation and storage temperature will reduce expected life time or destroy the LED module.

V1.0 09/23- Official authorized licensee of the OSRAM trademark.

Specifications are subject to change without notice. Errors and omission excepted, always make sure to use the most recent release.

©2023 TRAXON TECHNOLOGIES. ALL RIGHTS RESERVED

[www.traxon-ecue.com](http://www.traxon-ecue.com)

3 of 4

# LUXPOINT® LED Waterproof Batten - Gerran

## Ordering codes

Model No.	Wattage	CCT	Fixture Lumen	Light Source Lumen	Size(mm)	Item code	EAN-13
LP WP V01 18W 830 SF 600	18W	3000K	1720lm	2550lm	565x43x47	GL24101078955	4897135734001
LP WP V01 18W 840 SF 600	18W	4000K	1800lm	2650lm	565x43x47	GL24101079055	4897135734018
LP WP V01 18W 865 SF 600	18W	6500K	1800lm	2650lm	565x43x47	GL24101079155	4897135734025
LP WP V01 36W 830 SF 1200	36W	3000K	3420lm	5100lm	1165x43x47	GL24101079255	4897135734032
LP WP V01 36W 840 SF 1200	36W	4000K	3600lm	5300lm	1165x43x47	GL24101079355	4897135734049
LP WP V01 36W 865 SF 1200	36W	6500K	3600lm	5300lm	1165x43x47	GL24101079455	4897135734056
LP WP V01 45W 830 SF 1500	50W	3000K	4275lm	5800lm	1465x43x47	GL24101079555	4897135734063
LP WP V01 45W 840 SF 1500	50W	4000K	4500lm	6300lm	1465x43x47	GL24101079655	4897135734070
LP WP V01 45W 865 SF 1500	50W	6500K	4500lm	6300lm	1465x43x47	GL24101079755	4897135734087

OSRAM is a trademark of OSRAM GmbH.  
TRAXON is a licensee of product trademark OSRAM for a fixed list of General Lighting product.

Service contact:  
Traxon Technologies Ltd.  
Room 113, Wireless Centre, 3 Science Park East Avenue, Shatin,  
Hong Kong, China  
[www.traxon-ecue.com](http://www.traxon-ecue.com)

Traxon Technologies Europe GmbH  
Karl-Schurz-Str. 38, 33100 Paderborn, Germany

